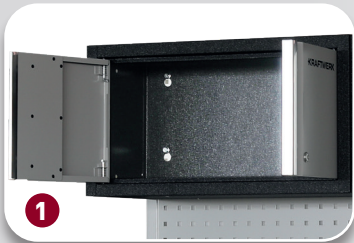


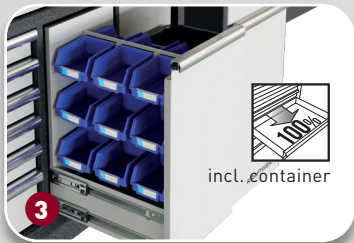
AVAILABLE AT THE BEGINNING OF AUGUST 2024



1

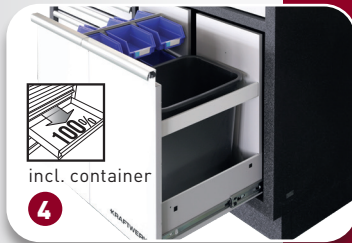


2



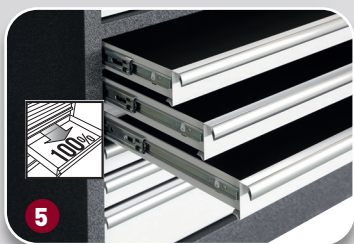
3

incl. container



4

incl. container



5



6

Expand your workshop with our new MOBILIO elements!

Even more storage space and flexibility with the double-width cabinets

We are expanding our range with four new MOBILIO elements: three with a width of 1360 mm and one with a width of 680 mm. This gives you even more options for customising your workshop. The new cabinets are twice as wide as our previous models and therefore offer an enormous amount of storage space for tools, accessories and small parts.

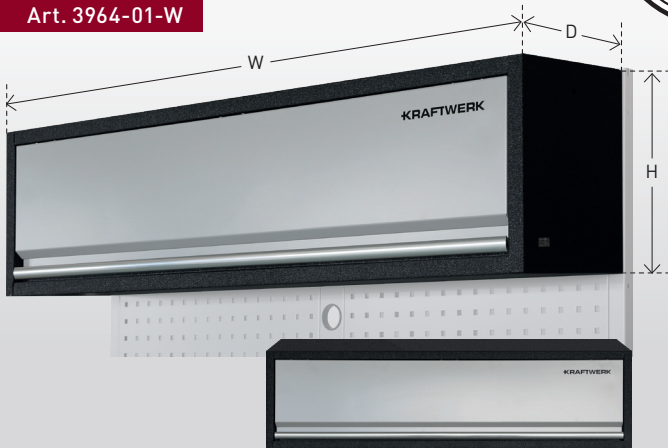
Flexible and versatile:

- Modular system: The new cabinets can be combined with all other MOBILIO elements as required
- High-quality features: Ball-bearing drawer runners, full-extension drawers, high-quality locks, silver aluminium handles and much more
- Choice of worktops: Beech multiplex or 430 stainless steel
- For every need: Whether you are a professional or an ambitious DIY enthusiast, the new MOBILIO units will meet your requirements

Expand your workshop and create an optimum working environment with the new MOBILIO elements in a width of 1360 mm wide!



Art. 3964-01-W

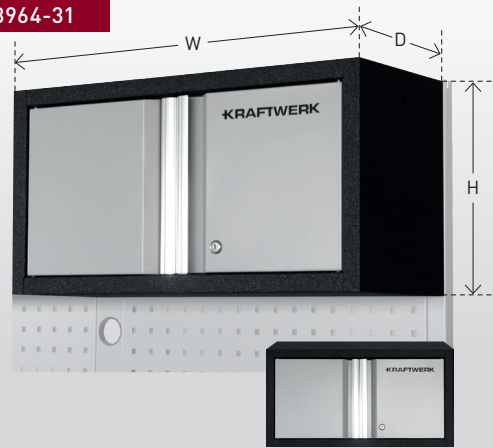


MOBILIO wall unit, wide, with gas suspension

This wall unit fits seamlessly into your MOBILIO workshop system and offers additional storage space for tools and accessories thanks to its width of 1360 mm. Suitable for mounting on the perforated wall (incl. screws) or for mounting directly on the wall. The gas struts ensure effortless opening of the lid. Supplied fully assembled.

W 1360 × H 350 × D 281 mm | Δ 17 kg

Art. 3964-31

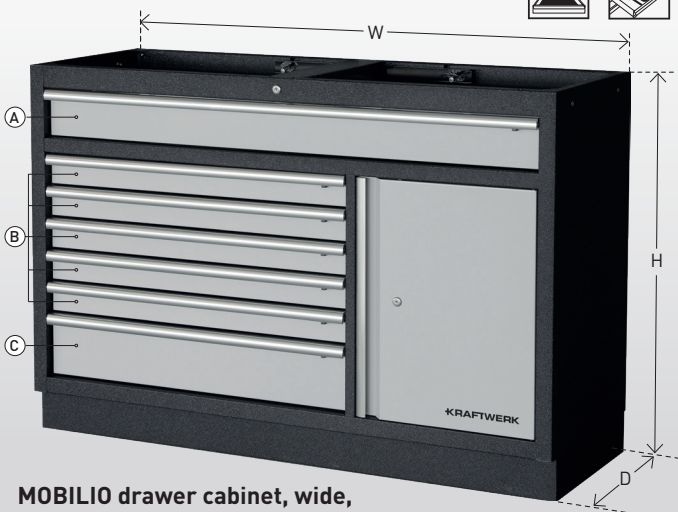


MOBILIO wall unit, 2-door, lockable

The wall unit with a width of 680 mm adds additional storage capacity to your MOBILIO workshop system. It can be combined with all base cabinets (except corner cabinets). A high-quality lock with two keys protects your tools from unauthorised access. Supplied fully assembled.

W 680 × H 350 × D 281 mm | Δ 10 kg

Art. 3964-02-W



MOBILIO drawer cabinet, wide, 7 drawers and cabinet

Versatile cabinet for your garage or workshop. The workshop cabinet impresses with its flexibility and functionality. Ball-bearing drawer runners allow the drawers to be opened and closed completely and effortlessly. An adjustable shelf in the door provides additional storage space. A high-quality lock with two keys ensures the security of your tools. The cabinet is supplied pre-assembled. The worktop is available in either beech multiplex or 430 stainless steel.

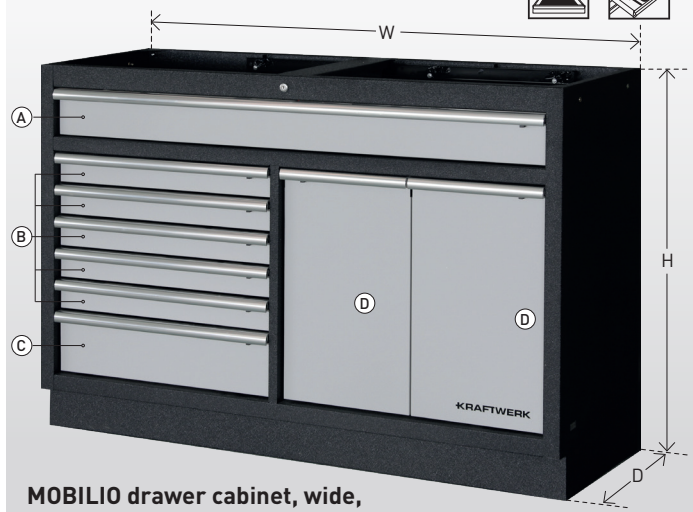
Drawers:

- Ⓐ 1 × W 1273 | H 114 | D 406 mm
- Ⓑ 5 × W 808 | H 74 | D 406 mm
- Ⓒ 1 × W 808 | H 153 | D 406 mm



W 1360 × H 910 × D 458 mm | Δ 101,3 kg

Art. 3964-03-W



MOBILIO drawer cabinet, wide, 7 drawers and 2 pull-outs

The drawer cabinet offers a wide range of options for storing tools and small parts. Ball-bearing drawer runners allow the drawers to be opened and closed completely and effortlessly. A high-quality lock with two keys ensures the security of your tools. 12 plastic trays provide additional storage space for small parts. A waste bin inside the drawer ensures tidiness and cleanliness. The cabinet is supplied pre-assembled. The worktop is available in either beech multiplex or 430 stainless steel.

Drawers:

- Ⓐ 1 × W 1273 | H 114 | D 406 mm
- Ⓑ 5 × W 593 | H 74 | D 406 mm
- Ⓒ 1 × W 593 | H 153 | D 406 mm
- Ⓓ 2 × W 320 | H 548 | D 406 mm

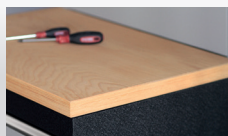


W 1360 × H 910 × D 458 mm | Δ 95,5 kg

Art. 3964-09

MOBILIO beech multiplex worktop, W 1361mm

Panel thickness 35 mm



Art. 3964-21

MOBILIO stainless steel 430 worktop, W 1361 mm

Panel thickness 38 mm

